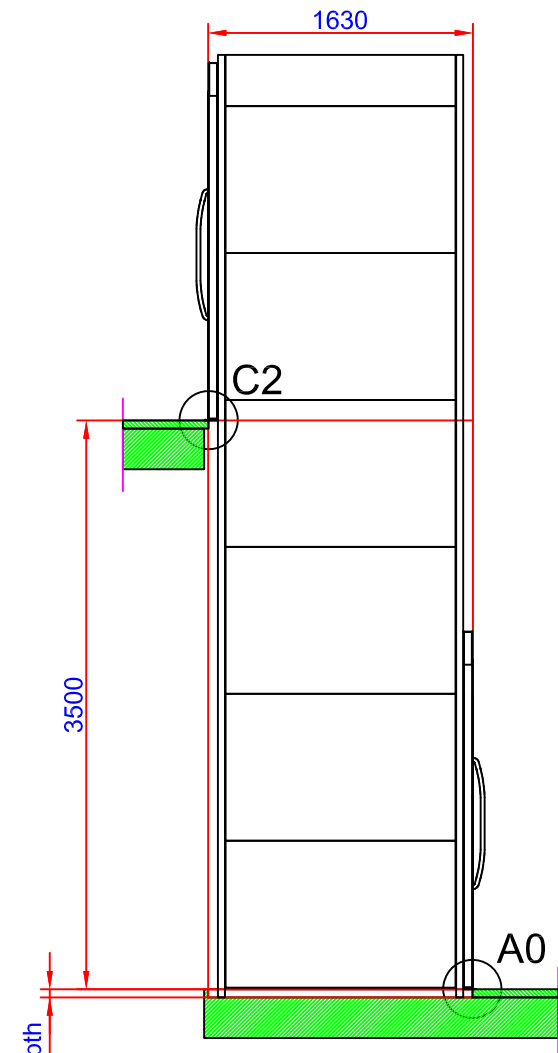


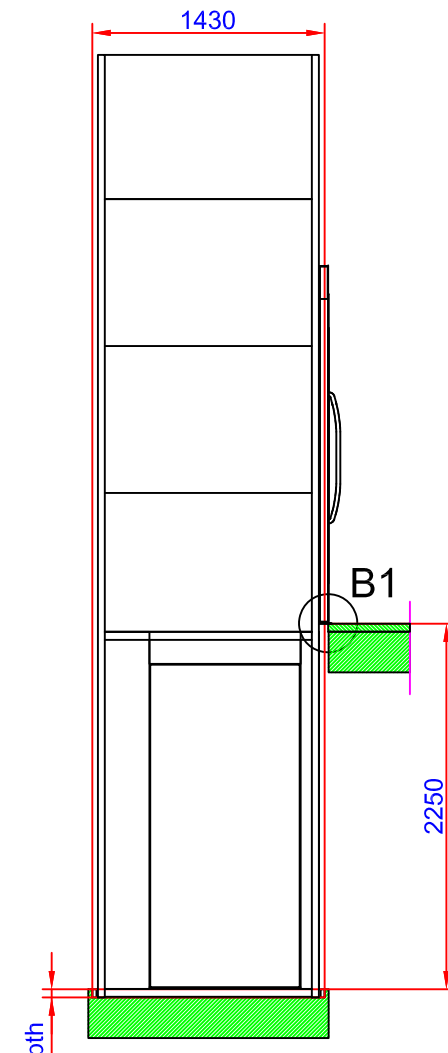
Shaft cutout sizes

Lift unit installed within a shaft by others

Door front cutout sizes		
Landing	Width	Height
A 0	1430	2250
B 1	1630	2250
C 2	1430	2250

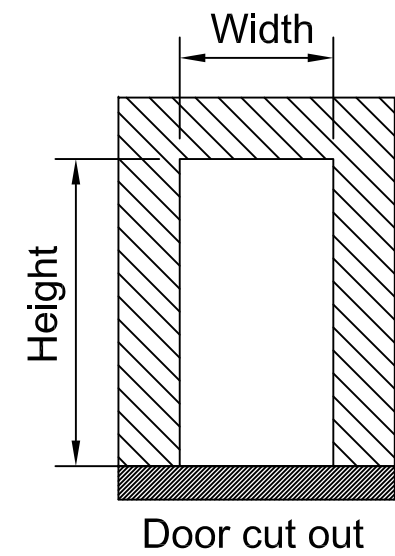
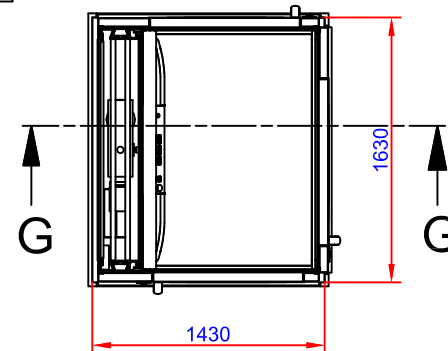
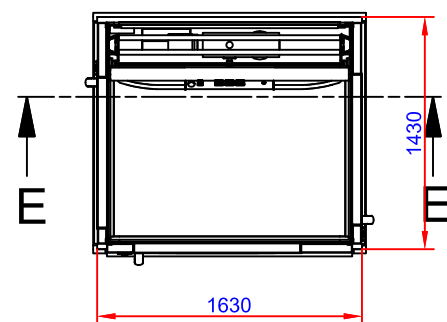


Section E-E

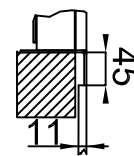


Section G-G

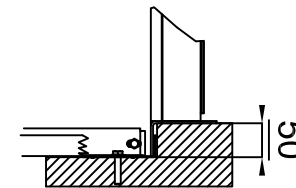
50 mm pit depth + 10 mm, - 0 mm.
Bottom surface must be flat



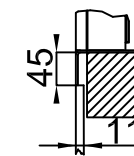
C2 (1:10)



A0 (1:10)



B1 (1:10)



Approved by
builder:

European view placement:



Tender no

Order no

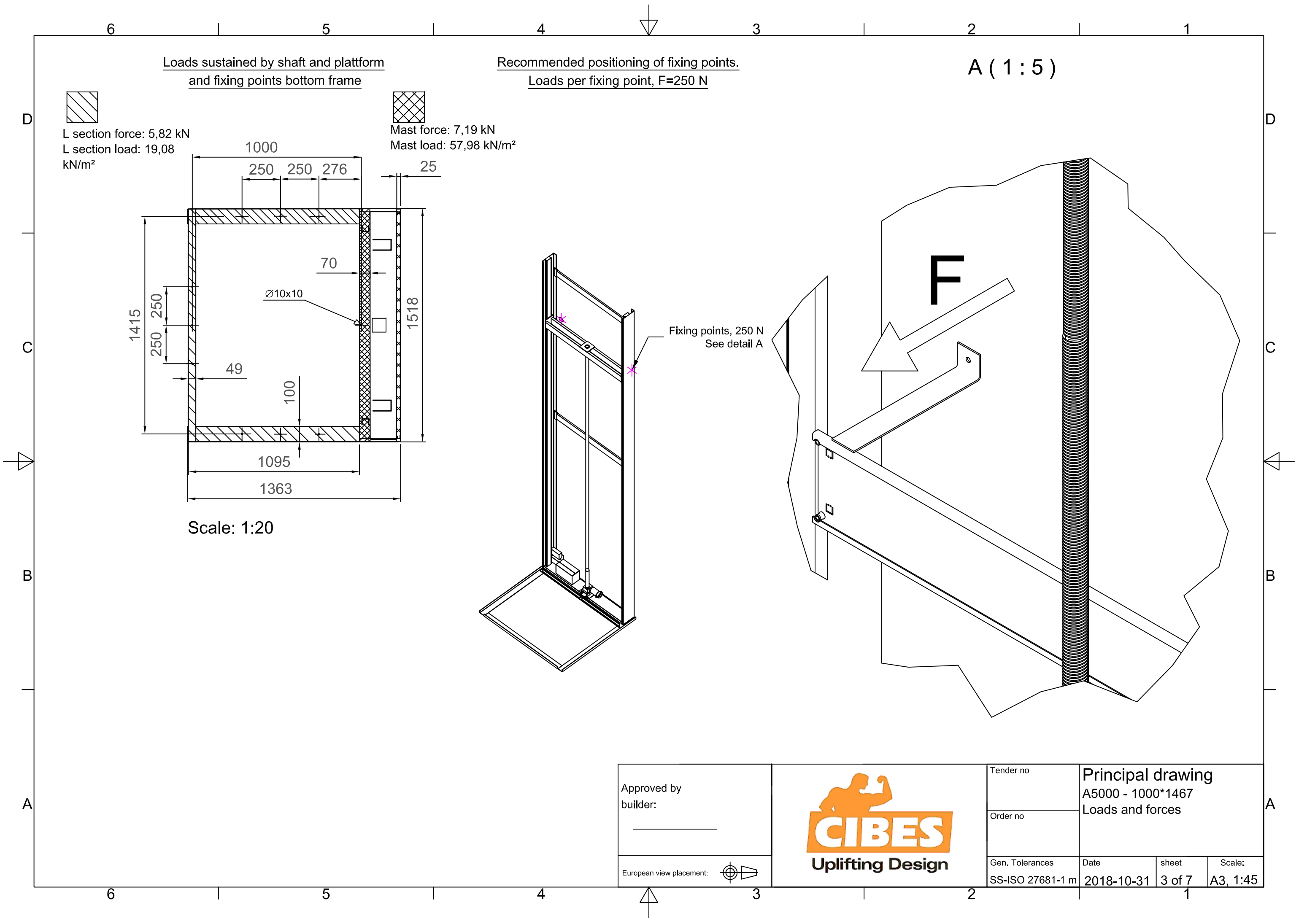
Gen. Tolerances
SS-ISO 27681-1 m

Principal drawing
A5000 - 1000*1467
Cut out sizes

Date
2018-10-31

sheet
2 of 7

Scale:
A3, 1:45



Approved by
builder:

European view placement:



Tender no

Order no

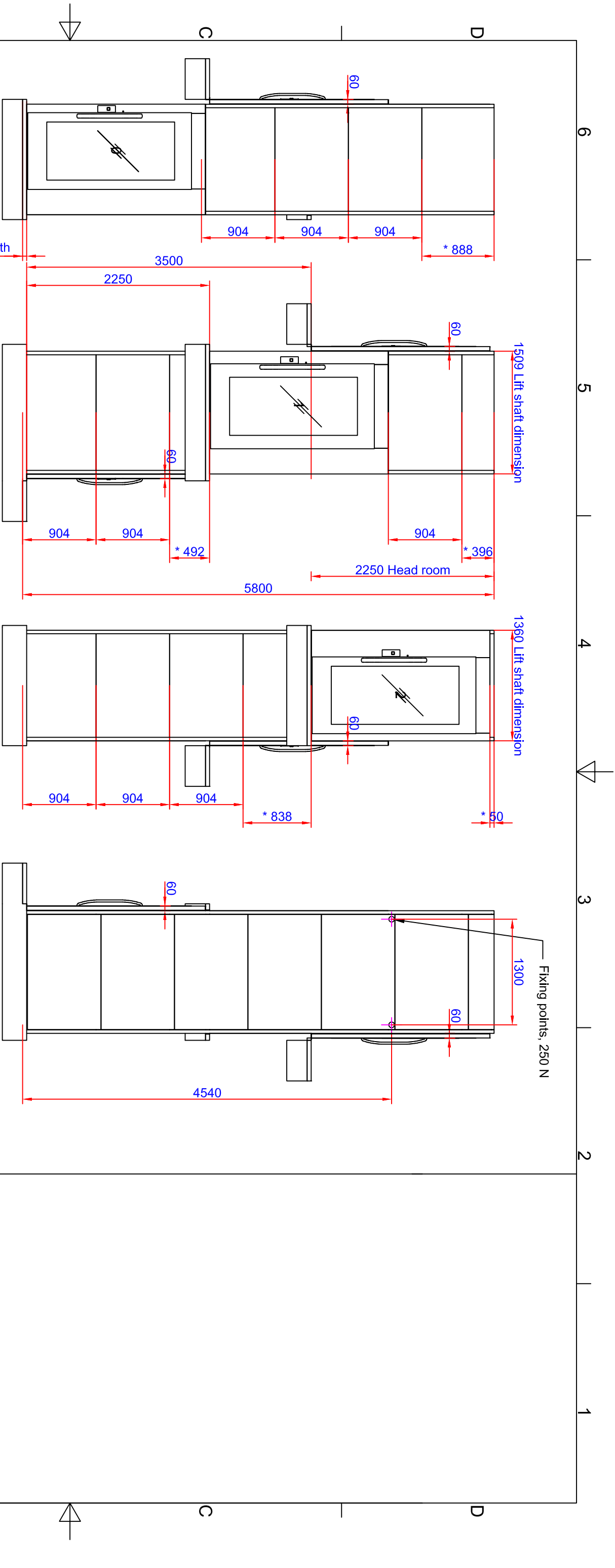
Gen. Tolerances
SS-ISO 27681-1 m

Principal drawing
A5000 - 1000*1467
Loads and forces

Date
2018-10-31

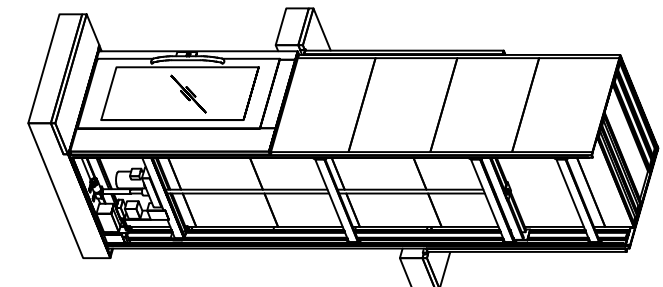
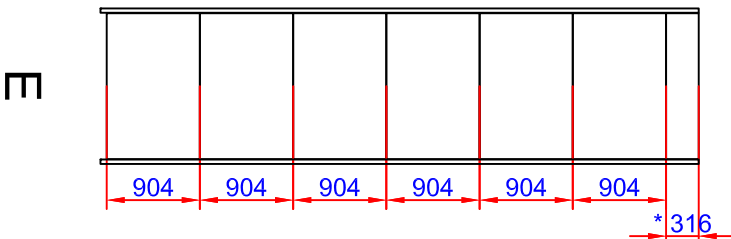
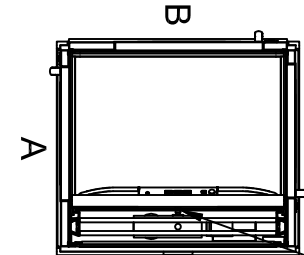
sheet
3 of 7

Scale:
A3, 1:45



Positioning of machinery:

E=Shield wall



Options
Frekv 1x230/240V 50-60Hz 16 A Soft
Capacity: 400,00 kg

*To be adapted on site
**Customized panel

Approved by
builder:

European view placement:



Tender no

Order no

Principal drawing
A5000 - 1000*1467
Shaft drawing

Gen. Tolerances

SS-ISO 27681-1 m

Date

2018-10-31

sheet

1 of 7

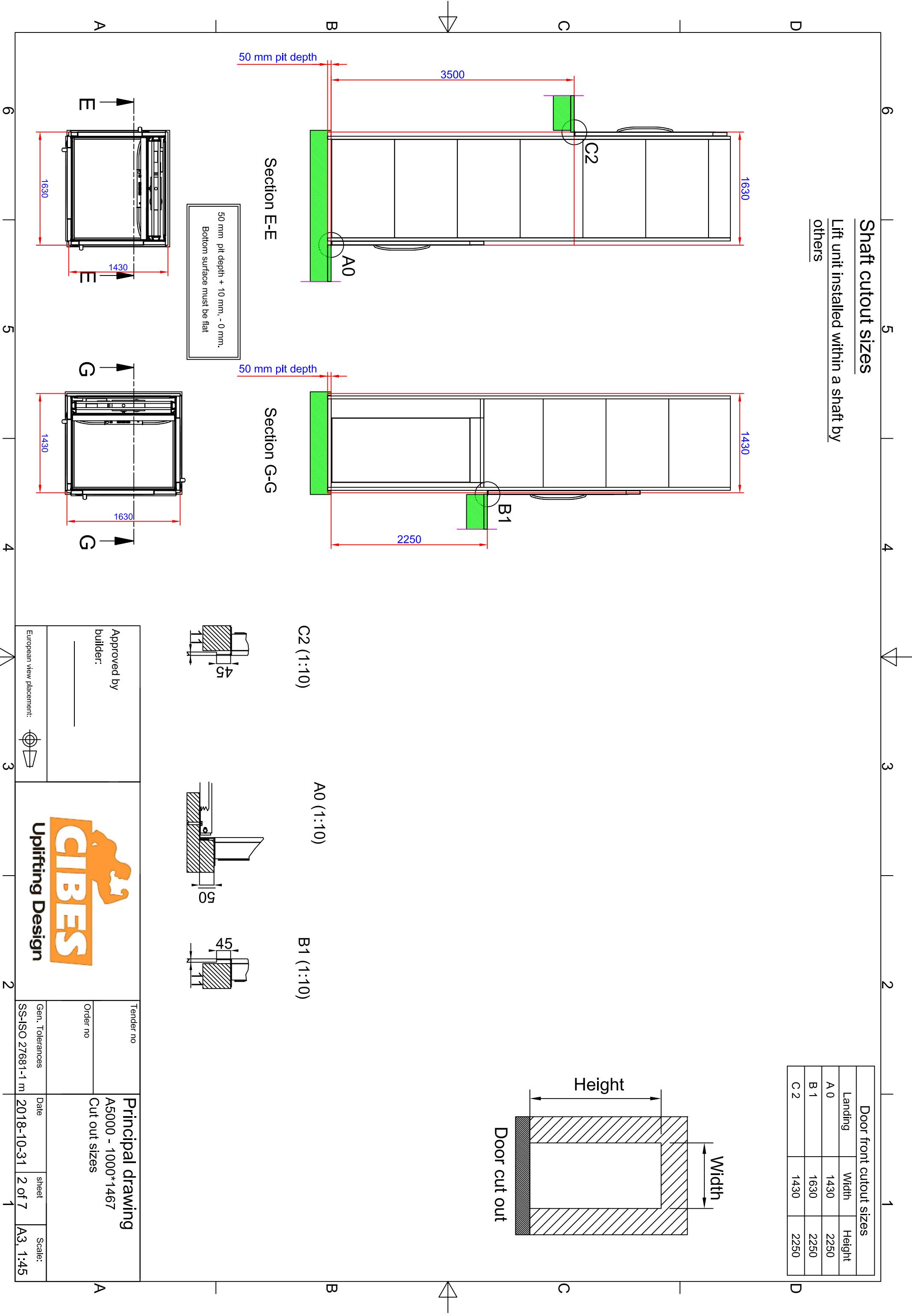
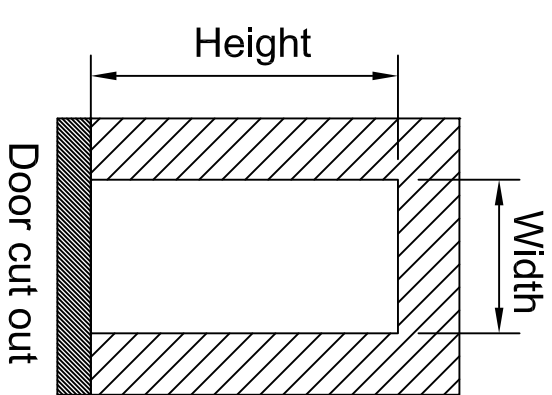
Scale:

A3, 1:45

Shaft cutout sizes

Lift unit installed within a shaft by others

Door front cutout sizes		
Landing	Width	Height
A 0	1430	2250
B 1	1630	2250
C 2	1430	2250



6

5

4

3

2

1

Loads sustained by shaft and platform

and fixing points bottom frame



L section force: 5,82 kN

L section load: 19,08
kN/m²



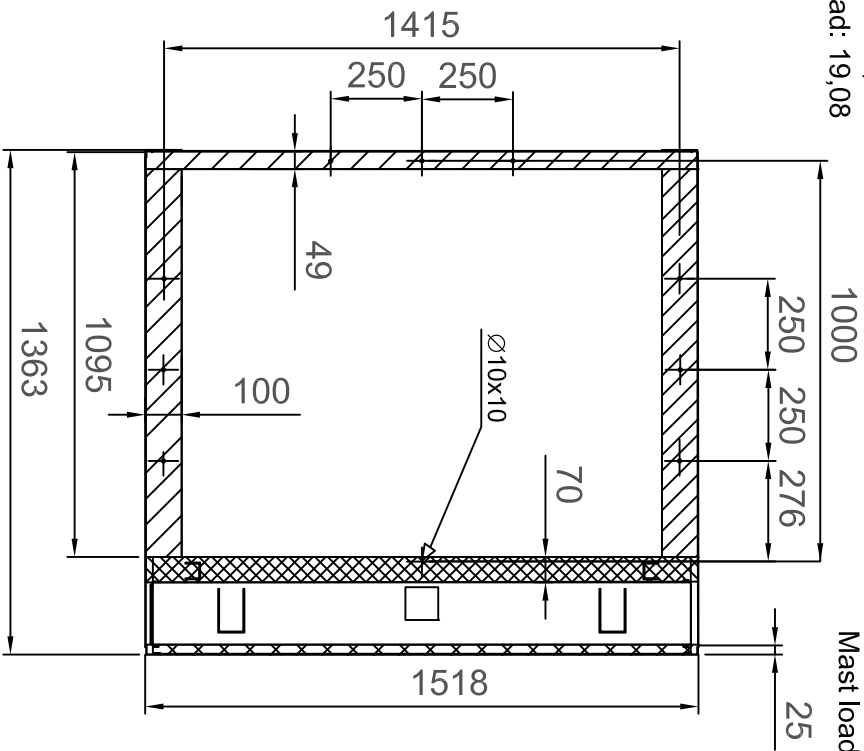
Mast force: 7,19 kN

Mast load: 57,98 kN/m²

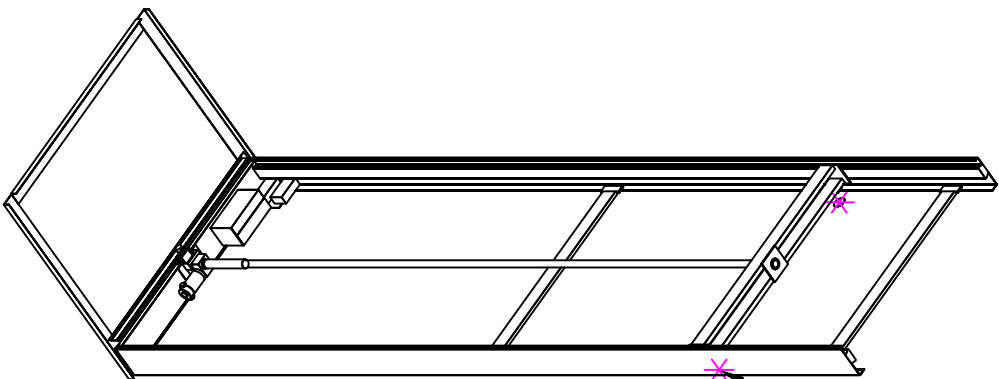
Recommended positioning of fixing points.

Loads per fixing point, $F=250\text{ N}$

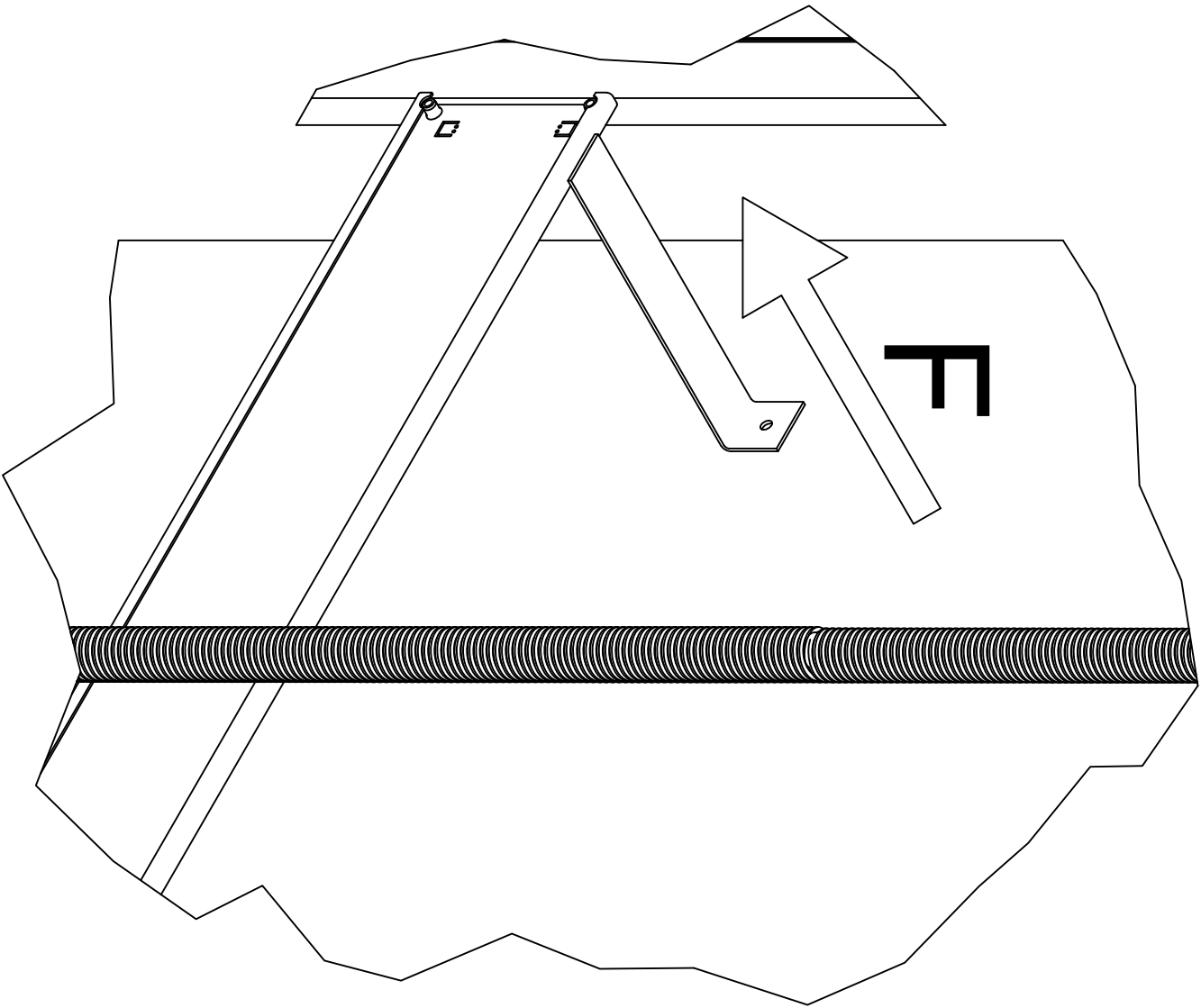
A (1 : 5)



Scale: 1:20



Fixing points, 250 N
See detail A



A

B

C

D

A

B

C

D

Approved by
builder:

European view placement:



Tender no

Principal drawing
A5000 - 1000*1467
Loads and forces

Order no

Gen. Tolerances

SS-ISO 27681-1 m

Date

2018-10-31

sheet

3 of 7

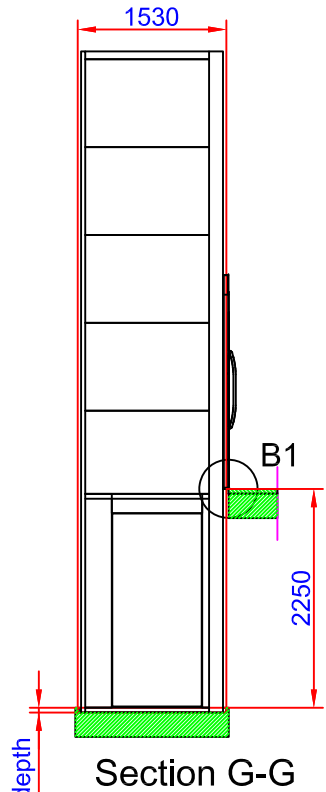
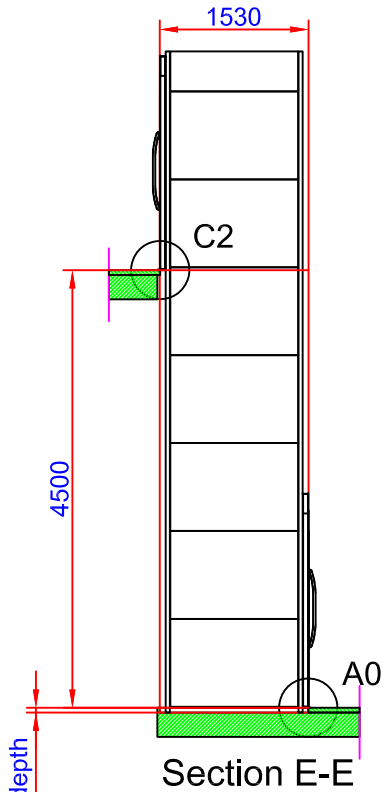
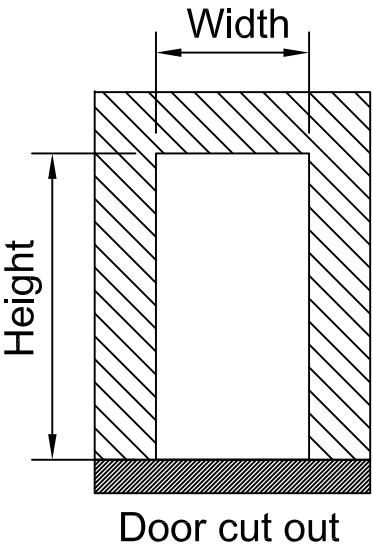
Scale:

A3, 1:45

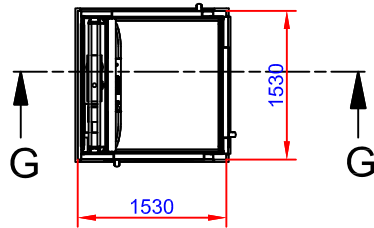
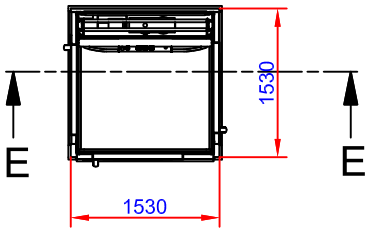
Shaft cutout sizes

Lift unit installed within a shaft by others

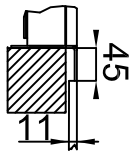
Door front cutout sizes		
Landing	Width	Height
A 0	1530	2250
B 1	1530	2250
C 2	1530	2250



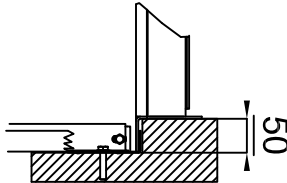
50 mm pit depth + 10 mm, - 0 mm.
Bottom surface must be flat



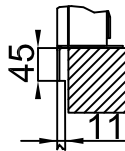
C2 (1:10)



A0 (1:10)



B1 (1:10)



Approved by
builder:

European view placement:



Tender no

Order no

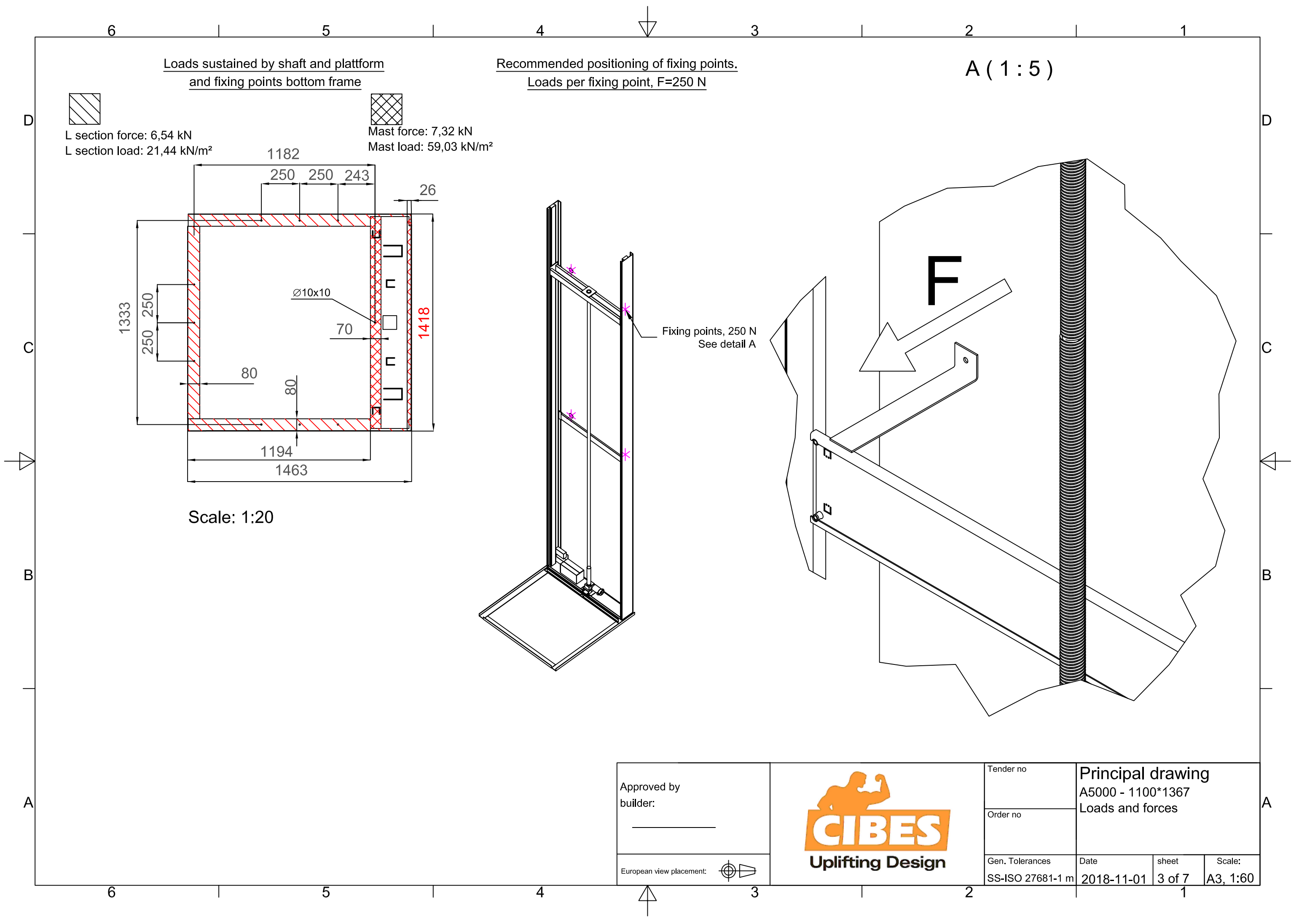
Gen. Tolerances
SS-ISO 27681-1 m

Principal drawing
A5000 - 1100*1367
Cut out sizes

Date
2018-11-01

sheet
2 of 7

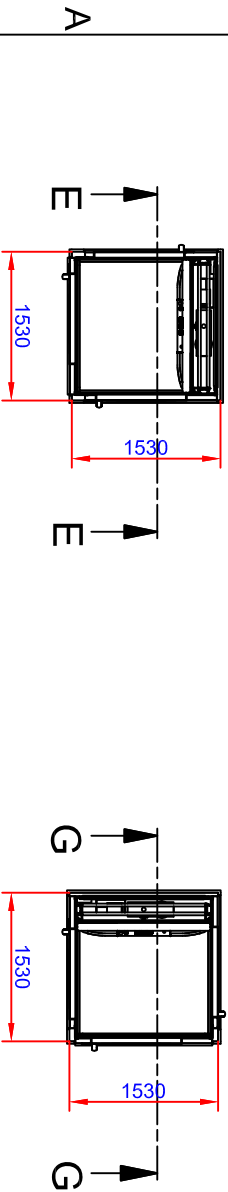
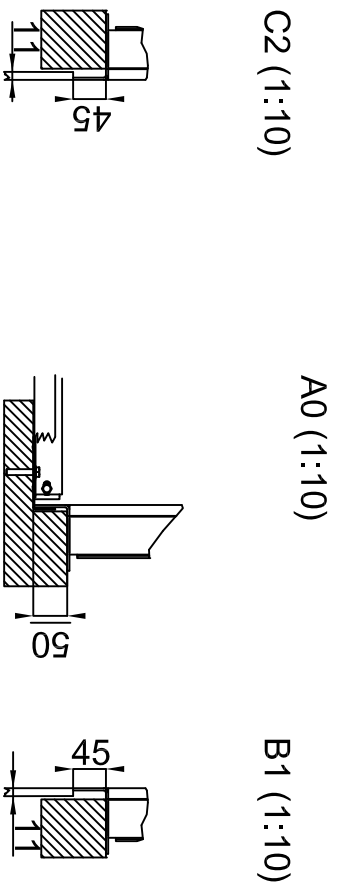
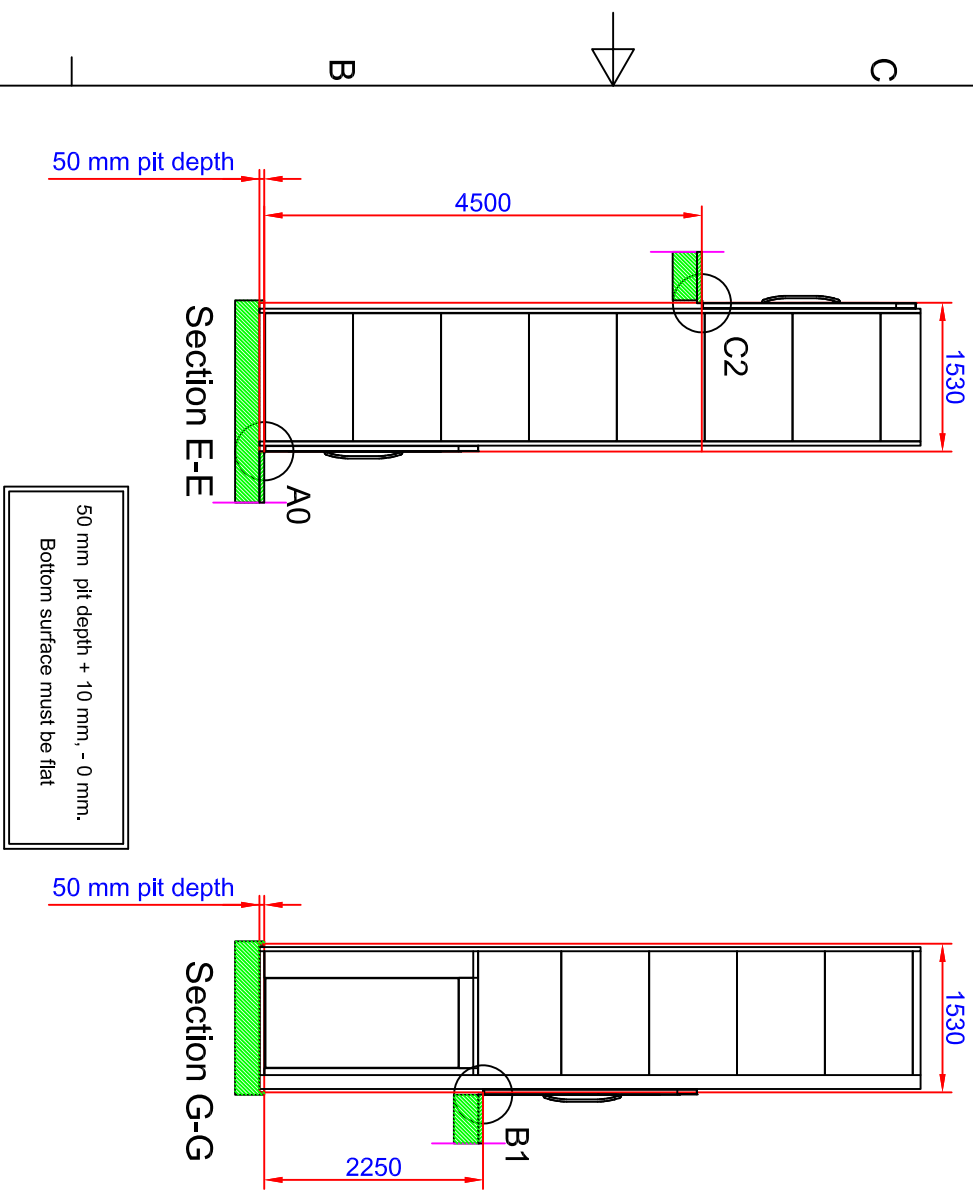
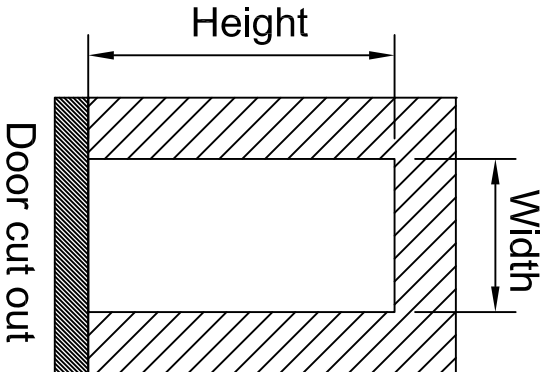
Scale:
A3, 1:60



Door front cutout sizes			
Landing	Width	Height	
A 0	1530	2250	
B 1	1530	2250	
C 2	1530	2250	

Shaft cutout sizes

Lift unit installed within a shaft by others



Approved by builder: _____				Tender no		Principal drawing A5000 - 1100*1367 Cut out sizes	
European view placement:				Order no			
Gen. Tolerances SS-ISO 27681-1 m		Date 2018-11-01		sheet 2 of 7		Scale: A3, 1:60	

